

# CONFIDENTIALITY NOTICE

THIS PRESENTATION AND ITS CONTENTS ARE CONFIDENTIAL AND PROPRIETARY TO OHANA REAL ESTATE DEVELOPMENT AND CONSTRUCTION L.L.C. (“OHANA”). THE INFORMATION CONTAINED HEREIN IS PROVIDED EXCLUSIVELY FOR THE USE OF THE INTENDED RECIPIENT, IN CONNECTION WITH THE EVALUATION AND POTENTIAL MARKETING OF THE REAL ESTATE PROJECT DESCRIBED HEREIN.

THIS PRESENTATION IS FOR YOUR EXCLUSIVE USE OF AND IS NOT TO BE SHARED, REPRODUCED, OR DISTRIBUTED IN WHOLE OR IN PART TO ANY THIRD PARTY, INCLUDING BUT NOT LIMITED TO PROSPECTIVE CLIENTS, WITHOUT THE PRIOR WRITTEN CONSENT OF OHANA.

OHANA RETAINS OWNERSHIP OF ALL INTELLECTUAL PROPERTY AND PROPRIETARY INFORMATION CONTAINED IN THIS PRESENTATION.

UNAUTHORIZED USE, DISCLOSURE, OR DISTRIBUTION OF THIS PRESENTATION MAY RESULT IN CIVIL AND CRIMINAL LIABILITIES, INCLUDING BUT NOT LIMITED TO INJUNCTIVE RELIEF, DAMAGES, AND LEGAL FEES. BY ACCESSING AND REVIEWING THIS PRESENTATION, YOU ACKNOWLEDGE AND AGREE TO ABIDE BY THE TERMS AND CONDITIONS SET FORTH HEREIN. ANY BREACH OF THESE TERMS MAY LEAD TO LEGAL CONSEQUENCES.



# ELIE SAAB

## WATERFRONT

by

 OHANA  
DEVELOPMENT







# ELIE SAAB

## WATERFRONT

---

EL IE SAAB WATERFRONT BY OHANA IS THE REFERENCE OF A FUTURISTIC CONVENIENT RESIDENTIAL HAVEN IN AL REEM ABU DHABI, WHERE THE INNOVATIVE ARCHITECTURE AND EXQUISITE INTERIORS CRAFTED BY ELIE SAAB MAISON ENTWINE TO CREATE NOT JUST LUXURIOUS LIVING SPACES BUT AN EMBODIMENT OF FAMILY-ORIENTED VALUES AND LUXURIOUS EASE.



# CONFIGURATION

PENTHOUSE

THE UNIQUE TASTE OF INNOVATION, SOPHISTICATION, AND COMFORT THAT ELIE SAAB WATERFRONT BY OHANA OFFERS HIGHLIGHTS THE METICULOUS ATTENTION TO DETAIL AND THE ARRAY OF PREMIUM AMENITIES AND THE CUSTOMIZED ONE-OF-A-KIND CONVENIENCES.

33 FLOORS

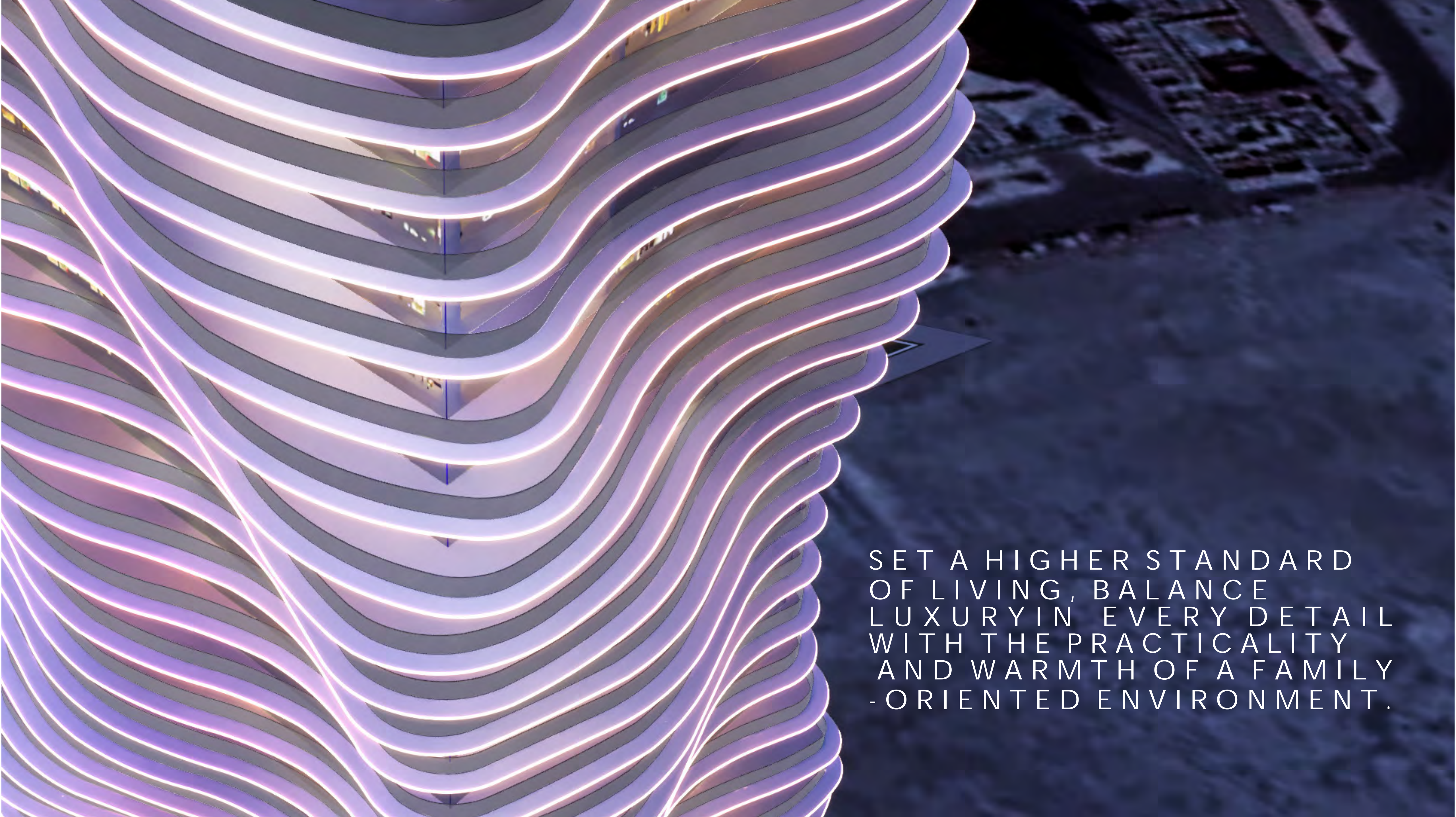
AMENITIES

PODIUMS

BASEMENT







SET A HIGHER STANDARD  
OF LIVING, BALANCE  
LUXURY IN EVERY DETAIL  
WITH THE PRACTICALITY  
AND WARMTH OF A FAMILY  
-ORIENTED ENVIRONMENT.

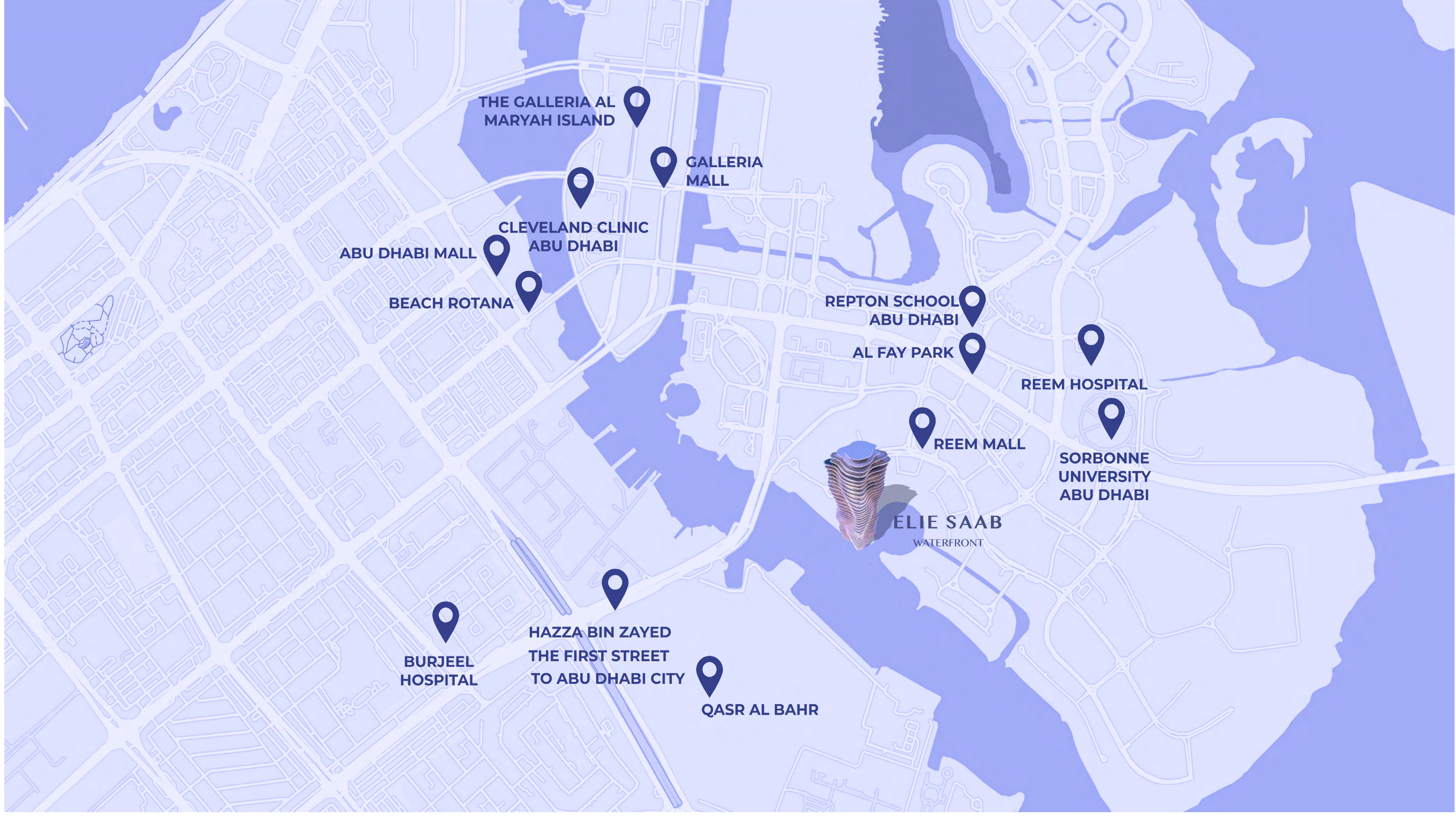


# OUR LOCATION

## AL REEM ISLAND







**THE GALLERIA AL  
MARYAH ISLAND**

**GALLERIA  
MALL**

**CLEVELAND CLINIC  
ABU DHABI**

**ABU DHABI MALL**

**BEACH ROTANA**

**REPTON SCHOOL  
ABU DHABI**

**AL FAY PARK**

**REEM HOSPITAL**

**SORBONNE  
UNIVERSITY  
ABU DHABI**

**REEM MALL**

**ELIE SAAB  
WATERFRONT**

**BURJEEL  
HOSPITAL**

**HAZZA BIN ZAYED  
THE FIRST STREET  
TO ABU DHABI CITY**

**QASR AL BAHR**





## PRIME LOCATION FEATURES OF ELIE SAAB WATERFRONT

**WALKING DISTANCE TO REEM MALL :**  
ENJOY THE CONVENIENCE OF A SHORT WALK TO A  
WORLD-CLASS SHOPPING EXPERIENCE.

**OVERLOOKING THE MARINA AND THE CANAL :**  
BREATHTAKING UNOBSTRUCTED VIEWS OF THE  
MARINA AND CANAL, RIGHT FROM YOUR WINDOW.

**DIRECT ACCESS TO HAZZA BIN ZAYED THE FIRST  
STREET BRIDGE :**  
SEAMLESS CONNECTIVITY TO ABU DHABI  
CITY CENTER.

**5-MINUTE DRIVE TO SORBONNE UNIVERSITY:**  
PROXIMITY TO PROMINENT UNIVERSITIES

**5-MINUTE DRIVE TO THE GALLERIA MALL :**  
QUICK ACCESS TO HIGH-END LUXURY SHOPPING  
AND DINING.

**PROXIMITY TO PROMINENT SCHOOLS :**  
A SHORT DRIVE TO NORD ANGLIA INTERNATIONAL  
SCHOOL, GEMS WORLD ACADEMY, AND REPTON  
SENIOR SCHOOL.

**NEARBY TOP-RATED HOSPITALS :**  
CLEVELAND CLINIC ABU DHABI, REEM HOSPITAL,  
MEDICLINIC, AND BURJEEL HOSPITAL WITHIN EASY  
REACH.

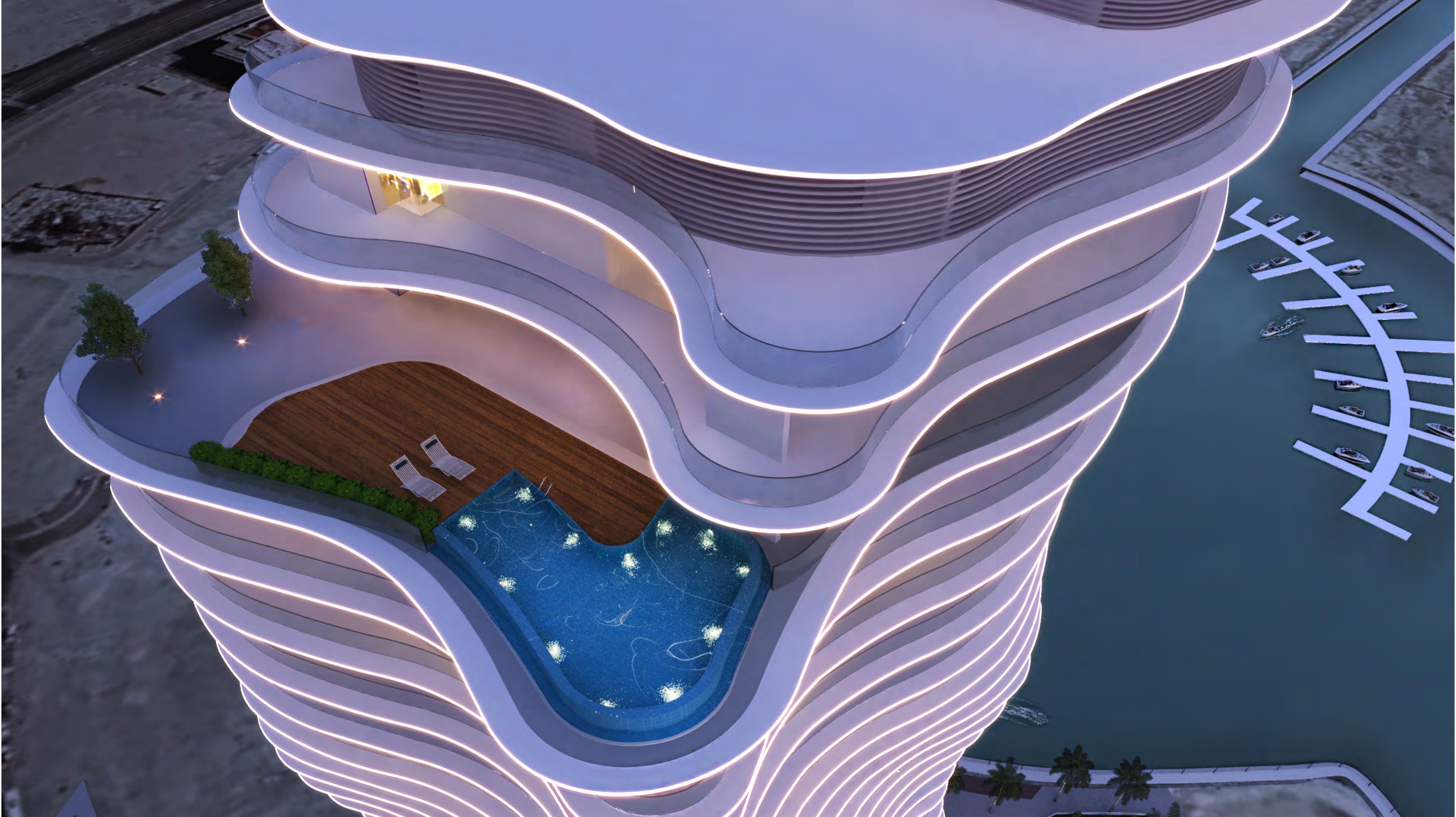
**EXPERIENCE UNPARALLELED CONVENIENCE AND  
LUXURY AT ELIE SAAB WATERFRONT.**



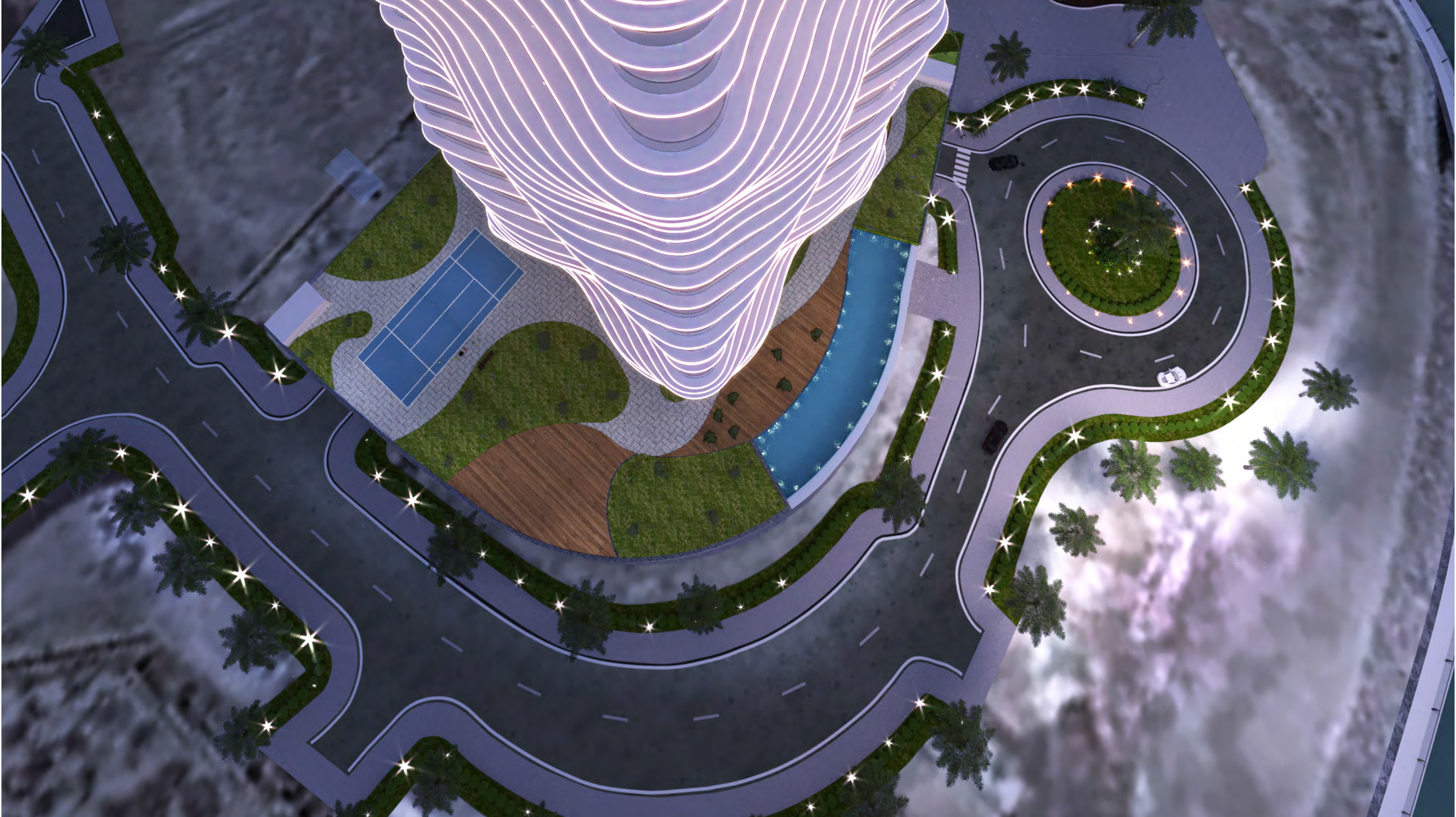
A man in a white suit and tie is leaning on a balcony railing. The background shows a cityscape with tall buildings and a body of water, suggesting a high-rise apartment or hotel. The text is overlaid on the image.

A CHOICE OF VIEWS  
FROM CITY TO SEA TO  
YACHTS MARINA











FULLY FURNISHED  
OPTIONS BY ELIE SAAB,  
SUSTAINABLE AMENITIES  
LIKE ELECTRIC VEHICLE  
RECHARGE STATIONS,  
AND THE EXCLUSIVITY  
OF PENTHOUSE  
CONFIGURATIONS



























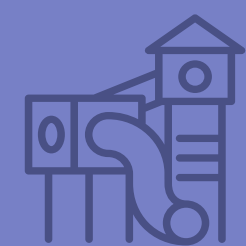


A NEW BENCHMARK  
IN REFINED LIVING

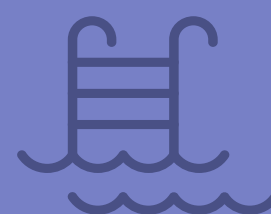




# AMENITIES & FACILITIES



KIDS PLAYGROUND



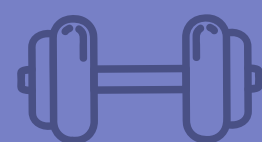
OUTDOOR POOL



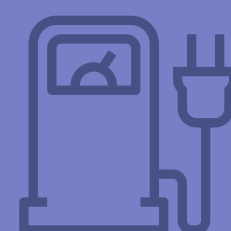
GARDEN



VISITORS PARKING



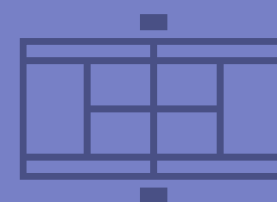
GYM



ELECTRIC VEHICLE  
RECHARGE STATION



FULLY FURNISHED



PADEL BY ELIE SAAB OPTIONAL



# KIDS PLAYGROUND





GYM





CREATE A HIGHER  
STANDARD OF LIVING







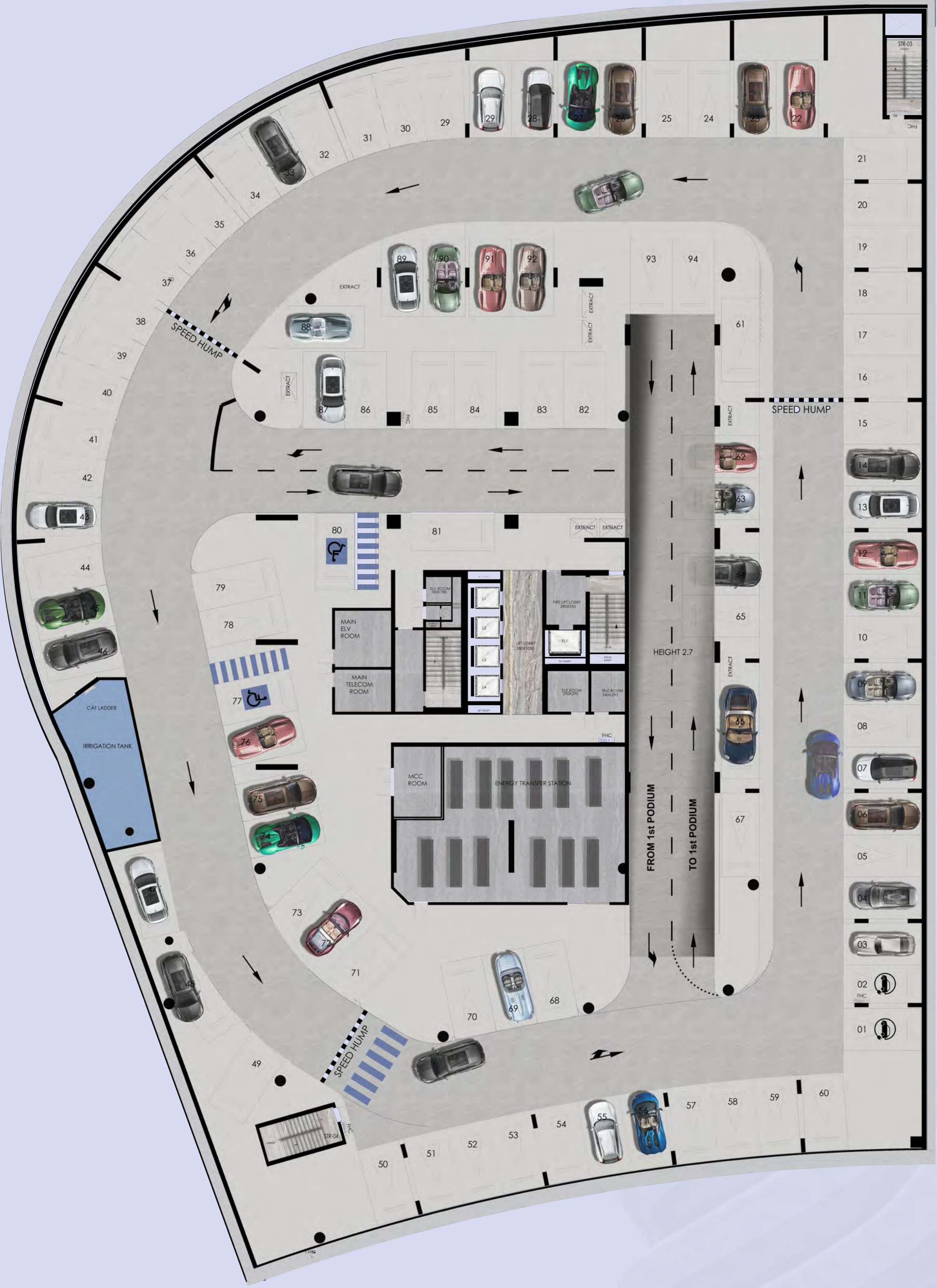
SEA / CITY VIEW

SEA VIEW

YACHT MARINA VIEW



# LAYOUT BASEMENT





# LAYOUT ENTRANCE





# LAYOUT PODIUM

SEA VIEW

SEA/CITY VIEW



YACHT MARINA VIEW



# LAYOUT OF THE APARTMENTS



## SEA VIEW

## SEA / CITY VIEW



## YACHT MARINA VIEW



LAYOUT PENTHOUSE  
35<sup>TH</sup> FLOOR

SEA VIEW



YACHT MARINA VIEW



LAYOUT PENTHOUSE  
36<sup>TH</sup> FLOOR

SEA VIEW



YACHT MARINA VIEW





OHANA DEVELOPMENT



OHANA-DEVELOPMENT.COM



OHANA\_DEVELOPMENT



OHANA DEVELOPMENT